

MARVINE

Elementary School

249 STUDENTS

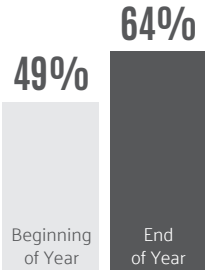


LITERACY

DEMONSTRATED SCHOOLWIDE ACADEMIC GROWTH

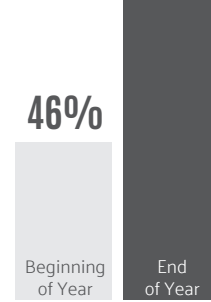
STUDENTS PROFICIENT OR ADVANCED

Source: Acadience Reading



All Grades

★ 31% INCREASE



Kindergarten

★ 91% INCREASE

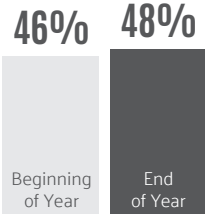


MATH

DEMONSTRATED SCHOOLWIDE ACADEMIC GROWTH

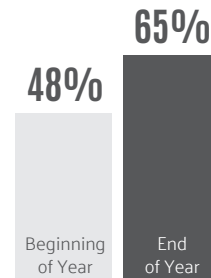
STUDENTS PROFICIENT OR ADVANCED

Source: IXL Math



All Grades

★ 4% INCREASE



Second Grade

★ 35% INCREASE

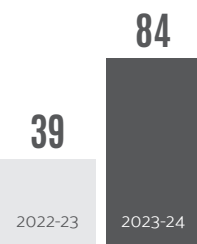


SUMMER LEARNING

PREVENTED SUMMER LEARNING LOSS

STUDENTS ENGAGED IN SUMMER LEARNING

Source: School Data



All Grades

★ 115% INCREASE



UNITED WAY

School Partners



MARVINE

Elementary
School



STUDENT MENTAL HEALTH

SOCIAL-EMOTIONAL LEARNING ACTIVITIES IMPROVE SCHOOL CLIMATE AND CULTURE

57% of students identified through the Student Assistance Program as needing behavioral health supports were connected to services through mental health programs, mentoring and support groups.

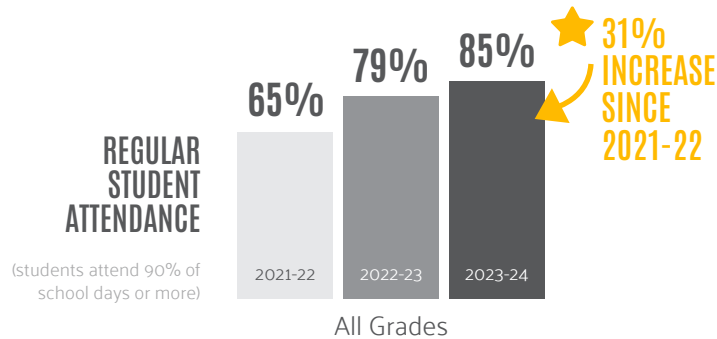
Keys to Success:

- Programs provided by St. Luke’s University Health Network, Valley Youth House and Pinebrook Family Answers
- Staff trained in trauma-informed and restorative practices
- Positive behavior supports
- Peace corners in every classroom
- Focus on staff wellness
- Commitment to promoting student voice
- Social-emotional wellness integrated into daily instruction



STUDENT ATTENDANCE

MORE STUDENTS REGULARLY ATTENDING SCHOOL

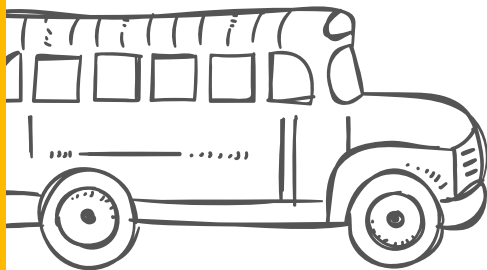


Keys to Success

- Through the Lunch Bunch program, led by a Moravian University community fellow, students received one-to-one counseling as well as group activities to incentivize school attendance.

“This program was successful and helped to decrease chronic school absenteeism for students that participated.”

– Luis Vasquez, Marvine Community School Coordinator



UNITED
WAY

School Partners



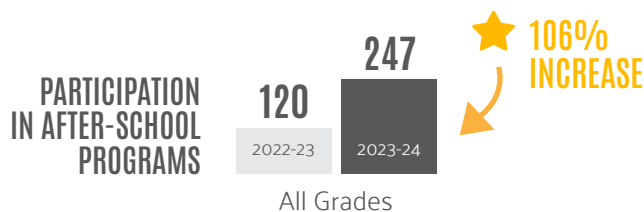
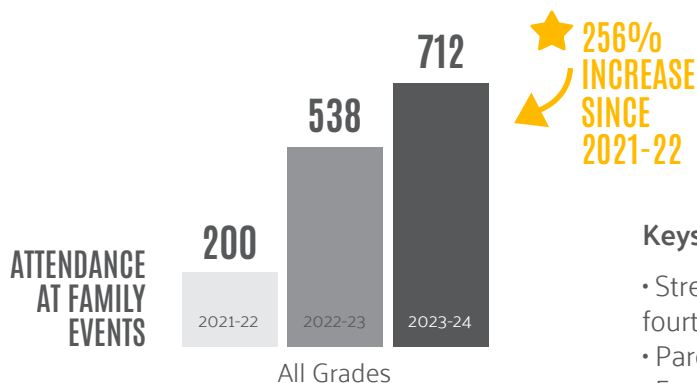
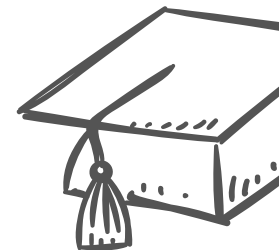
MARVINE

Elementary School



STUDENT AND FAMILY ENGAGEMENT

INCREASED PARTICIPATION IN STUDENT AND FAMILY PROGRAMS



Keys to Success:

- Strengthening Families Program for fourth- and fifth-grade families
- Parent workshops
- Family Needs Assessment
- School climate survey
- Family input in School Improvement Plan
- Monthly engagement events, such as parent/caregiver date night



FAMILY STABILITY

INCREASED CONNECTIONS TO FOOD, HOUSING AND FINANCIAL SUPPORTS

1,070 FAMILIES

and students improved access to nutritious food through a school-based food pantry and partnership with Second Harvest Food Bank.

20 FAMILIES

improved housing security through New Bethany's Housing Advocates program, funded by United Way



COMMUNITY PARTNERSHIPS

EXPANDED AND DEEPENED CONNECTIONS WITH PARTNERS AND VOLUNTEERS

916 VOLUNTEER HOURS

valued at \$29,128

\$6,060

in-kind donations



UNITED WAY

School Partners

