

United Way of the Greater Lehigh Valley

# IMPACT REPORT 2026



UNITED  
WAY



UNITED WAY OF THE  
GREATER LEHIGH VALLEY

ENVISIONS COMMUNITIES WHERE  
EVERY PERSON  
*belongs* AND  
*thrives*



# UNITED WE THRIVE

The past year reminded us that the needs of our community do not stand still. At United Way of the Greater Lehigh Valley, we saw how quickly circumstances can change for families, students and older adults. What remained constant was our responsibility to respond with care and to move at the **speed of need**.

Because of the generosity and partnership of donors like you, we invested **\$30,702,253** into the community and reached nearly **250,000 people** through programs led or supported by your United Way. When needs evolved, we adapted. We strengthened our focus on education, community stability and healthy aging and adjusted our approach to meet people where they were, when they needed it most.

That kind of responsiveness is made possible through strong partnerships and deep trust across our community. When challenges intensified for families and nonprofit partners alike, we stayed steady. We provided flexible support, listened carefully and acted quickly, so individuals and families could continue to access the support they rely on.

Thank you for trusting your United Way and for helping lead this work forward. Together, we are building a community that is more responsive, more compassionate and more resilient. **Because when we are UNITED, our community thrives.**

## Board of Directors

Joe Savage, Chair  
Matthew Green, Ph.D.,  
Vice Chair

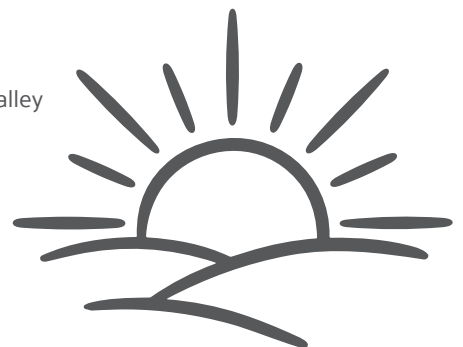
Anne Baum  
Joe Bergstein  
Carol Birks, Ed.D.  
Scott Blair  
Michael Butz  
Vicki Doulé  
Dorota Gasienica-  
Kozak, Esq.  
Veronica Gonzalez  
Laurie Hackett  
Vanessa Hartline  
James Irwin  
Dwayne Jones  
Erica Melendez  
Tracy Piazza  
Maggie Reilly  
Thomas Ripsam  
Peter Ruggiero  
Tyrone Russell  
Melanie Sanchez-Jones  
Jack Silva, Ed.D.  
Connor Topper  
Jason Vanderburg  
Joe Welsh  
Robin Zmoda



**Joe Savage**  
Chief Financial Officer and  
Executive Vice President  
Victaulic  
United Way Board Chair



**Marci Lesko**  
President and  
Chief Executive Officer  
United Way of the Greater Lehigh Valley



## EDUCATION

\$6,721,205

Supporting academic success  
for 42,859 students and families

## COMMUNITY STABILITY

\$3,476,591

Connecting 178,589 people to  
food, housing and mental  
health and emergency services

# COMMUNITY INVESTMENT

\$30,702,253



## HEALTHY AGING

\$968,503

Improving the quality of  
life for 7,932 older adults  
and caregivers

## COMMUNITY CAPACITY BUILDING

\$955,017

Building a strong and  
equitable nonprofit sector

## DONOR DESIGNATIONS

\$13,822,498

Providing direct support  
for 1,182 health and human  
service nonprofits

## COMMUNITY ENGAGEMENT, FUNDRAISING AND ADMINISTRATION

\$4,758,439

Engaging the community around a  
shared vision for a strong future

See page 22 for

**FULL FINANCIALS**



## CRITICAL SUPPORT FUND

Families across the Greater Lehigh Valley received immediate food and emergency relief through the **Critical Support Fund**, a joint effort of United Way and the Lehigh Valley Community Foundation. Launched in October 2025 to address urgent community needs, the fund allows partners to act quickly and deliver direct support to thousands of neighbors facing food insecurity and other critical challenges.

The Critical Support Fund was created to meet immediate needs, beginning with food access, while remaining flexible to respond to other emergency and crisis supports as they arise. This work was carried out in partnership with Second Harvest Food Bank of the Lehigh Valley and Northeast Pennsylvania, a program of Community Action Lehigh Valley.

In addition to **food distribution**, funds have been invested in **warming shelter operations** in Easton, including a \$15,000 investment to support Safe Harbor, as well as **food delivery** and alternative food access options for individuals who are unable to reach food pantries, **utility assistance** for working families struggling to afford basic needs and after-school program food access.

“This collaboration shows how philanthropy and community partnerships can work together to respond quickly and effectively when our neighbors need support most.”

- Erika Riddle Petrozelli, Lehigh Valley Community Foundation

▶ **\$689,000+**  
**RAISED**

▶ **100+**  
**FOOD PANTRIES**  
**SUPPORTED**

▶ **775,995**  
**POUNDS OF FOOD**  
**PURCHASED**

▶ **25,750+**  
**HOUSEHOLDS**  
**SERVED MONTHLY**

across Carbon, Lehigh,  
Northampton and  
Monroe Counties

# CORNERSTONE SOCIETY

Cornerstone Society members each contribute more than \$100,000 annually to support impact in the Greater Lehigh Valley and beyond.



MORE THAN  
\$10,000,000



MORE THAN \$5,000,000



”

*“We’re honored to stand alongside United Way and our nonprofit partners as we work together to create a more stable and hopeful future for thousands of people across the region.”*

- Lissette Santana, PPL Foundation

MORE THAN \$1,000,000



\$500,000-\$999,999



\$250,000-\$499,999



\$100,000-\$249,999



# 2024 CAMPAIGN

With the support of 11,030 donors and partners, United Way raised a **record-setting \$26,231,833** during the 2024 annual campaign, led by Campaign Chair Chris Martin of Martin Guitar.

This marks **15 consecutive years of growth and investment** in the region's most pressing needs. **Thank you, Chris Martin and Martin Guitar!**

## GIVING SOCIETIES

### TOCQUEVILLE SOCIETY

Acknowledges successful business and philanthropic leaders whose passion and generosity fuel high-impact solutions in our local community.

*For individuals or couples who make an annual gift of \$10,000 or more.*

### LEGACY CIRCLE

Recognizes donors who make a gift to United Way's endowment or include United Way in their estate plans to ensure lasting impact for future generations.

### LEADERSHIP CIRCLE

Connects local leaders who are UNITED in addressing our region's greatest challenges and creating measurable, lasting change.

*For individuals or couples who make an annual gift of \$1,000 or more.*

### WOMEN UNITED

Mobilizes dynamic business and community leaders who are inspired to improve the lives of women, children and families across the Lehigh Valley.

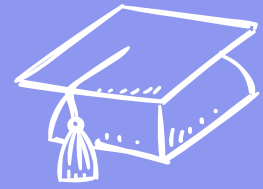
*For women and their advocates who make an annual gift of \$1,000 or more to our Women United designated giving and signature projects fund.*

”

*“I believe giving back and getting involved is part of our responsibility, and one of the things that makes the Greater Lehigh Valley special is how people show up for each other.”*

- Chris Martin





## EDUCATION

### 2030 BOLD GOAL

Increase the percentage of students ready to learn and successful in school so they graduate ready for life, college or career



# 42,859 CHILDREN

and families served through  
United Way-supported solutions

## UNITED WAY COMMUNITY SCHOOLS

*20 Years of  
Partnership and Progress*

- ▶ 19,744 STUDENTS
- ▶ 34 SCHOOLS
- ▶ 5 DISTRICTS

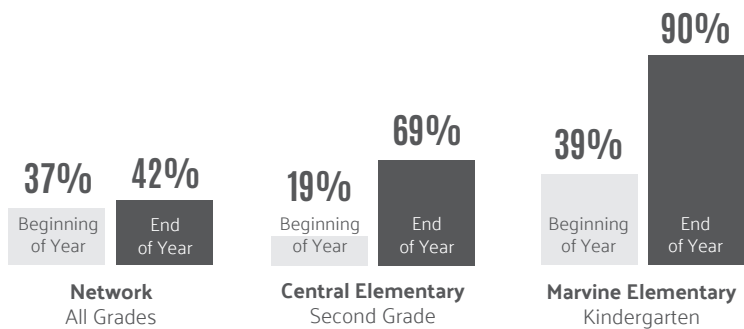
For 20 years, United Way Community Schools have transformed how we support students and families, turning schools into neighborhood hubs that surround every child with the supports they need to learn, grow and thrive.

By removing barriers to learning and meeting basic needs, Community Schools can drive academic success. They report improved student attendance, strengthened family engagement and a deepened sense of belonging. Today, United Way is committed to growing this history of success with a vision to ensure **every school is a Community School**.

### LITERACY

STUDENTS  
PROFICIENT  
OR ADVANCED

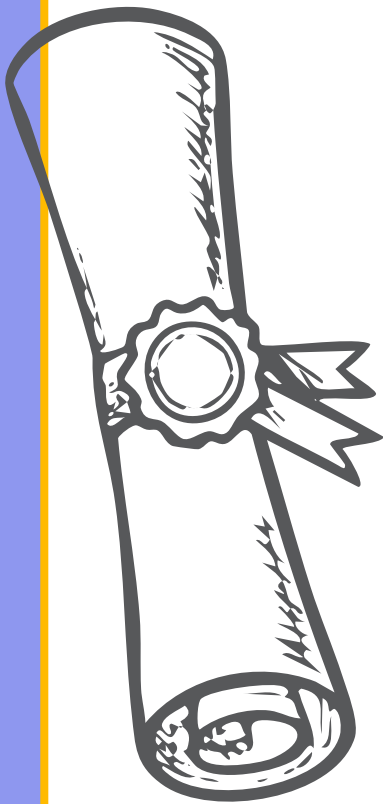
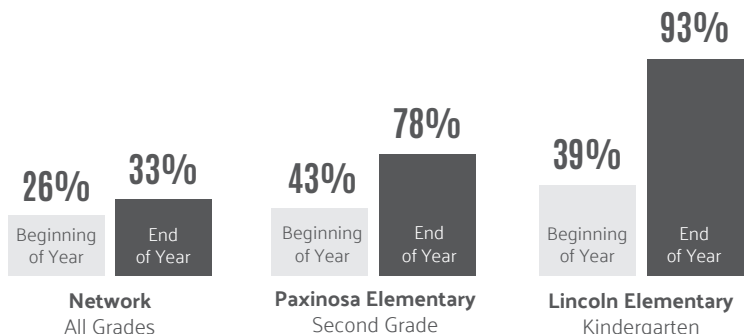
Source: Star Reading, Acadience Reading, IXL Language Arts, DIBELS



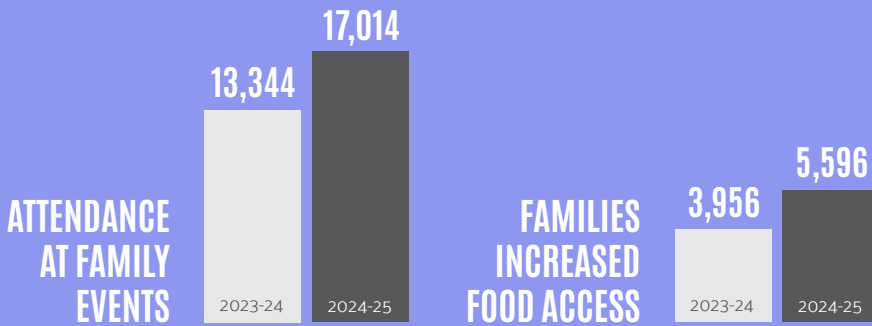
### MATH

STUDENTS  
PROFICIENT  
OR ADVANCED

Source: Star Math, IXL Math



# STRENGTHENING FAMILY STABILITY



Donegan Elementary School



Paxinos Elementary School



Salvaggio Academy

# PARTNERSHIPS FOR STUDENT SUCCESS

## StriveTogether®

Every child. Cradle to career.

United Way and the Leonard Parker Pool Institute for Health partnered to launch the first **StriveTogether** partnership in Pennsylvania in Allentown School District. This national network advances a cradle-to-career approach to **improving student and family success, building community leadership and aligning systems and data.**

## CAI UNITED FUND

CAI and United Way launched the **CAI United Fund**, advancing accessible education and helping families thrive in the Greater Lehigh Valley. By reducing absenteeism and expanding access to food, mental health services, after-school activities and parent workshops, this partnership **drives measurable gains in student success** across the region.

▶ **22 PARTNERS**

▶ **1,747 STUDENTS**

engaged in attendance and wellness programs

” This collaboration is not just an investment in education; it’s a commitment to nurturing the potential of every child and building a stronger, more resilient community.”

- Tom Salvaggio, CAI



Central Elementary STREAM Academy

# SUPPORTING EARLY LEARNING

## 17,729 FAMILIES

accessed early learning resources supported or led by United Way

## 1,609 CHILDREN

received high-quality programming through United Way-funded kindergarten readiness supports

▶ **79% OF PARTICIPANTS**

met or exceeded developmental milestones and are **ready for kindergarten**



*“Having access to these supports built the necessary confidence in my child as a student, classmate and friend.”*

- Parent, Pinebrook Family Answers



## UNITED WAY COMMUNITY SCHOOLS ▼

### Allentown School District

- Brigadier General Anna Mae Hays Elementary School
- Central Elementary STREAM Academy
- Francis D. Raub Middle School
- Harrison Morton Middle School
- Hiram W. Dodd Elementary School
- Jackson Early Childhood Center
- Jefferson Elementary School
- Mosser Elementary School
- Luis Ramos Elementary School
- Roosevelt Elementary School
- Sheridan Elementary School
- South Mountain Middle School
- Trexler Middle School
- Union Terrace Elementary School
- Washington Elementary School

### Bangor Area School District

- Bangor Area High School
- Bangor Area Middle School
- DeFranco Elementary School
- Five Points Elementary School
- Washington Elementary School

### Bethlehem Area School District

- Broughal Middle School
- Donegan Elementary School
- Fountain Hill Elementary School
- Freemansburg Elementary School
- Lincoln Elementary School
- Marvine Elementary School
- Northeast Middle School
- Thomas Jefferson Elementary School
- William Penn Elementary School

### Easton Area School District

- Cheston Elementary School
- Easton Area Middle School
- Paxinosa Elementary School

### Panther Valley School District

- Panther Valley Elementary School

### Salvaggio Academy

## LEAD PARTNERS ▼

- Air Products
- Allentown School District
- Ametek Foundation, Inc.
- Bangor Area School District
- Dan and Susan Barnes
- Bethlehem Area School District
- CAI
- Capital Blue Cross
- City Center Group
- Communities In Schools of Eastern Pennsylvania
- Crayola
- Easton Area School District
- Steve and Jeanne Follett
- HNL Lab Medicine
- Just Born Quality Confections
- Keel Infrastructure
- Lehigh University
- Bob and Sandy Lovett
- Moravian University
- Northampton Community College
- North Star Construction Management, Inc.
- Panther Valley School District
- PPL Corp.
- St. Luke's University Health Network
- Topper Foundation
- UWGLV TeenWorks
- UWGLV Women United
- Victaulic



## COMMUNITY STABILITY

### 2030 BOLD GOAL

Increase community safety and stability through food, housing and mental health services

Powered by





# 178,589 PEOPLE

connected to community stability resources and supports

▶ **62% increase** from 2024-25

## HOUSING STABILITY

### 6,849 RESIDENTS

served through United Way-supported shelter and housing programs

### \$700,000 PROVIDED

in rental and utility assistance

In partnership with Carbon County, we are helping families stay housed through the **Emergency Rental Assistance Program**.

To date, we've helped more than **168 households** maintain stable housing and meet basic needs by providing over \$700,000 in financial assistance for rent, rental arrears, utilities and home energy costs and other expenses related to housing.

## CRISIS AND DISASTER RESPONSE

### 30,932 PEOPLE

accessed United Way-supported crisis and disaster response such as **recovery services** for victims of fires and support for survivors of abuse and domestic violence

## FOOD ACCESS

### 89,574 PEOPLE

accessed food through United Way-supported programs, including **meal delivery, food pantries** and **Community School food services**

”

*“When families come to us in crisis, we meet them where they are. Sometimes they just need someone to listen, and sometimes they need someone to advocate alongside them. Either way, we’re here.”*

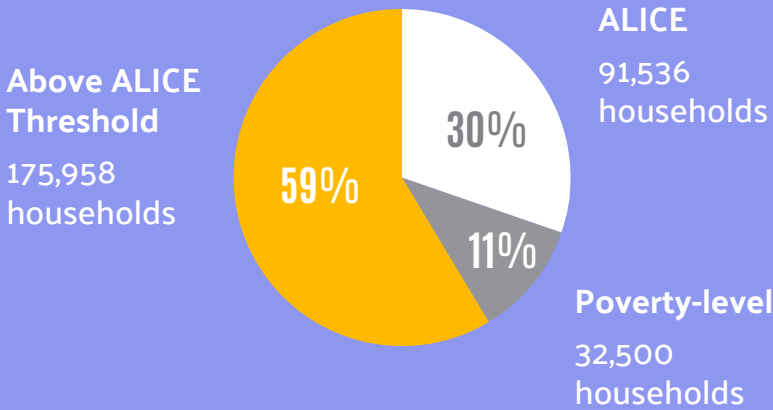
- Marshalena “Shelly” Agosto, Hispanic Center Lehigh Valley



## UNITED FOR WORKING FAMILIES

### MORE THAN 124,000 HOUSEHOLDS

in the Greater Lehigh Valley, or 41%, are struggling to make ends meet.



Through strong partnerships, innovative pilot programs and targeted investments, United Way of the Greater Lehigh Valley supports ALICE families by:

- connecting thousands of residents to **housing and rental assistance**
- providing information on **resources** via PA 211
- ensuring that people have access to **nutritious food**
- creating **opportunities** for children to be successful in school

## EMERGENCY SUPPORT

To support those displaced by the Jordan Creek encampment evacuation, a coalition of local organizations worked together to open the Allentown YMCA warming station nearly two months ahead of schedule.

Together, the City of Allentown, Lehigh County, Lehigh Valley Community Foundation, River Crossing YMCA and United Way responded to offer displaced residents **shelter, meals** and **critical supportive services**.



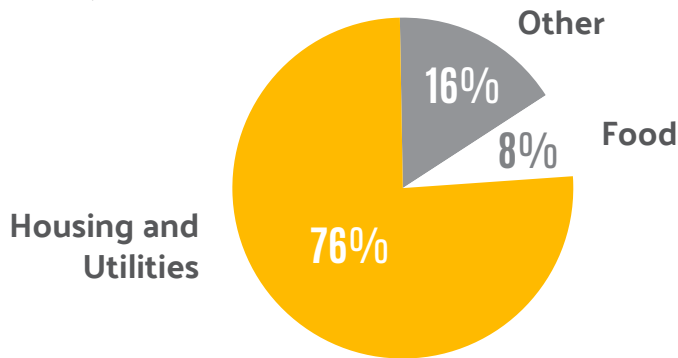
## ACCESS TO CRITICAL RESOURCES

### 55,300 REFERRALS THROUGH PA 211

health and human services helpline directing users to services such as housing assistance, food banks, healthcare, mental health support and employment services

\*In Lehigh, Northampton and Carbon Counties

### TOP REQUESTS



## PA 211: A LIFELINE DURING CRISIS

In 2025, United Way partnered with **Bloom for Women, Inc.**, to launch Flourish, a workforce development initiative to create meaningful employment opportunities for survivors of trafficking and exploitation.

Through the program, participants are trained as operators for the PA 211 call line, supporting community members in need while building skills for long-term career opportunities.

For survivors of trafficking and exploitation, finding safe and meaningful employment is often an uphill battle. Traditional workplaces can present risks of re-traumatization, and criminal records tied to their trafficking experience can create barriers to stable jobs. PA 211 offers a safe environment, a living wage and the chance to give back to the community.

“Our participants are not only gaining valuable skills for future careers, but they are also becoming lifelines for others in crisis.”

- Carol Andersen, Bloom for Women, Inc.





## HEALTHY AGING

### 2030 BOLD GOAL

Increase the percentage  
of older adults  
**connected to resources**  
to improve their health  
and quality of life





# 7,932 SENIORS

connected to resources through United Way-supported programs

▶ 90% reported greater **social connectedness**

## UNITED WAY COMMUNITY HUBS

**United Way Community Hubs** offer access to healthy food, healthcare and other resources that **enhance social connections** and overall well-being.

### 2,842 SENIORS

participated in five **Community Hubs**:

- Casa Guadalupe Center, Allentown
- Easton Area Neighborhood Center, Easton
- Hispanic Center Lehigh Valley, Bethlehem
- Lehigh Valley Active Life, Allentown
- River Crossing YMCA, Pen Argyl



### 38,000+ MEALS

served through **Community Hubs**

## RURAL ACCESS FOR HEALTHY SENIORS

A new multi-million-dollar endowment, the **Slate Belt Angels Fund**, will permanently support older adults in the Slate Belt. Honoring the Episcopal Apartments' legacy, the fund strengthens access to **safe housing, health programs** and **essential services**.

▶ **NEW IN 2026!** A grant from the Moses Taylor Foundation allowed for the expansion of the Community Hub model into **five new Community Hubs in Carbon County**:

- Jim Thorpe/Penn Kidder Senior Center, Jim Thorpe
- Lehigh Senior Center, Lehigh
- Palmerton Senior Center, Palmerton
- Panther Valley Senior Center, Nesquehoning
- Weatherly Senior Center, Weatherly

” *“This is a promise that older adults will have access to the support they deserve for generations to come.”*

- Robin Zmoda, Borough of Pen Argyl - Retired

# COMMUNITY PARTNERSHIPS

## 1,978 VOLUNTEERS

invested their time and energy in building a stronger Lehigh Valley.  
Thank you for your commitment to our community.

### DAY OF CARING

Together, an unprecedented 1,500 volunteers completed 8,000 hours of service during the 32nd United Way Day of Caring. Presented by Crayola and coordinated by Volunteer Center of the Lehigh Valley, Day of Caring is the area's **largest single-day volunteer effort**.

- ▶ 1,500 VOLUNTEERS
- ▶ 60 NONPROFITS
- ▶ \$284,475 IMPACT

” *“Day of Caring is a way that everybody can be part of something that is collectively adding to the well-being of the entire community.”*

- Laurie Hackett, Air Products



” *“This is where we really connect with our neighbors and community — and truly understand the impact we can make firsthand.”*

- Rick Bucher, Victaulic





“Day of Caring might be the most important day of the year for everyone. It gives 1,500 people a chance to be out in the community to make an impact.”

- Mike and Diane Molewski  
2025 United Way Campaign Co-Chairs

## AMERICORPS

Through the AmeriCorps state, national and Volunteers in Service to America (VISTA) initiatives, members create **measurable impact** by providing services and resources to United Way, local schools and other nonprofits.

Their work supports coordinated strategies that lead to more effective services, stronger partnerships and lasting community change.

- ▶ 24 MEMBERS
- ▶ 15 NONPROFITS
- ▶ 26,583 PEOPLE SERVED



# COLLECTIVE IMPACT

Thank you to our partners UNITED in creating long-term solutions to our community's greatest challenges.

## AGE-FRIENDLY LEHIGH VALLEY ▶

Building an inclusive community for people of all ages

## AMERICORPS

Expanding Collective Impact to address critical concerns

## LEADER IN ME

Empowering students to be life-ready learners

## LEHIGH VALLEY REGIONAL HOMELESS ADVISORY BOARD

Preventing homelessness

## RESILIENT LEHIGH VALLEY ▶

Building resilient youth, families and organizations through trauma-informed communities

## TEENWORKS™ ▶

Inspiring teen leadership through community service and support from labor unions

## UNITED WAY COMMUNITY SCHOOLS NETWORK ▶

Supporting students' needs and academic success



”

*“Crayola is proud to support United Way Community Schools in Easton. Giving back is a core part of who we are and we're honored to partner with organizations that share our commitment to helping every child learn and express their creativity.”*

- Pete Ruggiero, Crayola



AmeriCorps

Age-Friendly Lehigh Valley

## 2,970 SENIORS AND CAREGIVERS

of individuals living with dementia **connected to supports**



Resilient Lehigh Valley

## 692 YOUTH

connected to **school-based trauma-informed supports** through Handle With Care law enforcement partnership referrals



## 1,092 CARE PROVIDERS

trained in **trauma-informed** and **resiliency building practices**

United Way Community Schools

## 1,112 STUDENTS

participated in **summer learning programs**



## 90%

maintained or improved their literacy skills

TeenWorks

## TEENWORKS PROJECT OF THE YEAR RECIPIENT

Ryan Preletz



## LEHIGH VALLEY JUSTICE INSTITUTE

Lehigh Valley Justice Institute merged with United Way to **strengthen data-driven policy** and **criminal justice reform** while supporting eviction relief for families, youth-centered investments and local policy changes.

Support for this merger is provided by Lehigh Valley Justice Institute board members Richard Master of MCS Industries and Charlie Marcon of Duggan & Marcon and their families.





# FINANCIALS

as of June 30, 2025

## REVENUE

|                      |                     |
|----------------------|---------------------|
| Net Campaign         | \$24,881,591        |
| Grants               | \$3,748,832         |
| Investment Activity  | \$620,820           |
| Other Revenue        | \$633,615           |
| In-Kind              | \$660,830           |
| <b>Total Revenue</b> | <b>\$30,545,688</b> |

## EXPENSES

|   |                     |
|---|---------------------|
| <b>Community Investments</b>            |                     |
| Donor Designations                      | \$13,822,498        |
| Education                               | \$6,721,205         |
| Community Stability                     | \$3,476,591         |
| Healthy Aging                           | \$968,503           |
| Community Capacity Building             | \$955,017           |
| <b>Fundraising/Community Engagement</b> | <b>\$2,112,965</b>  |
| <b>Administration</b>                   | <b>\$2,645,474</b>  |
| <b>Total Expenses</b>                   | <b>\$30,702,253</b> |

## ASSETS

|                              |                     |
|------------------------------|---------------------|
| Cash                         | \$2,556,057         |
| Receivables and Prepays      | \$5,686,698         |
| Life Insurance Cash Values   | \$101,955           |
| Investments                  | \$12,075,915        |
| Right-of-Use Assets - Leases | \$2,726,715         |
| Fixed Assets                 | \$240,825           |
| <b>Total Assets</b>          | <b>\$23,388,165</b> |

## LIABILITIES AND NET ASSETS

|  |                     |
|--|---------------------|
| <b>Total Liabilities</b>                   | <b>\$6,361,217</b>  |
| Accounts Payable and Accrued Expense       | \$483,591           |
| Designations to Other UW's                 | \$2,921,608         |
| Lease Liabilities                          | \$2,860,409         |
| Liability to Donors, Split-Interest Trusts | \$95,609            |
| <b>Total Net Assets</b>                    | <b>\$17,026,948</b> |
| Without Donor Restriction                  | (\$4,162,114)       |
| Restricted for Time or Purpose             | \$13,555,238        |
| Restricted in Perpetuity                   | \$7,633,824         |
| <b>Total Liabilities and Net Assets</b>    | <b>\$23,388,165</b> |



# UNITED WAY PARTNERS

List current as of March 2026

Allentown Area Ecumenical Food Bank  
Allentown Art Museum  
Allentown Central Catholic High School  
Allentown Rescue Mission  
Allentown School District  
Allentown School District Foundation  
American Heart Association  
American Red Cross of Pennsylvania Rivers  
The Arc of Lehigh & Northampton Counties  
The Arc of Northeastern Pennsylvania  
ArtsQuest  
Ascend Counseling Services, Inc.  
Bangor School District  
Battle Borne  
Bethlehem Area Public Library  
Bethlehem Area School District  
Big Brothers Big Sisters of the Lehigh Valley  
Black gURLS Rise  
Bloom for Women  
Boy Scouts of America - Minsi Trails Council  
Boys & Girls Club of Allentown  
Boys & Girls Club of Bethlehem  
Boys & Girls Club of Easton  
Bradbury-Sullivan LGBT Community Center  
Burn Prevention Network  
Cancer Support Community  
    Greater Lehigh Valley  
Carbon County Action Committee  
    for Human Services  
Carbon County Right from the Start  
Casa Guadalupe Center  
Catholic Charities Diocese of Allentown  
Cay Galgon Life House  
Center for Humanistic Change  
Civic Theatre of Allentown  
Cohesion Network  
Communities In Schools of Eastern PA  
Community Action Lehigh Valley  
Community Bike Works  
Community Services for Children, Inc.  
Crime Victims Council  
    of the Lehigh Valley, Inc.  
Eastern PA Trans Equity Project  
Easterseals Eastern Pennsylvania  
Easton Area Community Center  
Easton Area Neighborhood Center, Inc.  
Easton Area School District  
Epoch Tribe  
Equi-librium, Inc.  
Family Connection of Easton, Inc.  
Family Promise of Carbon County  
Family Promise of Lehigh Valley  
Fine Feather Foundation, Inc.  
Girl Scouts of Eastern Pennsylvania, Inc.

Girls on the Run Lehigh Valley  
Global Hope International  
Grace Community Church/  
    Panther Valley Food Pantry  
Habitat for Humanity  
    of the Lehigh Valley  
Haven House  
Hispanic Center Lehigh Valley  
InnaStar  
Jewish Family Service  
    of the Lehigh Valley  
Joshway  
Joyful Giving  
Juneteenth Lehigh Valley  
Kellyn Foundation  
LatinosARE  
Laughing At My Nightmare, Inc.  
Lehigh Carbon Community  
    College Foundation  
Lehigh Conference of Churches  
Lehigh University  
Lehigh Valley Active Life  
Lehigh Valley Black Church  
    Housing Alliance  
Lehigh Valley Center for  
    Independent Living, Inc.  
Lehigh Valley Children's Centers, Inc.  
Lehigh Valley Health Network  
Lehigh Valley School District  
Lily's Hope Foundation  
Manito Life Center  
Manufacturers Resource Center  
Maternity Care Coalition  
Meals on Wheels of the  
    Greater Lehigh Valley  
Mercy School for Special Learning  
Mikayla's Voice  
Miller-Keystone Blood Center  
Mindful Child Initiative  
Miracle League Lehigh Valley  
Mock Turtle Marionette Theater  
Moravian University  
Mother2Mother Inc.  
Movement Moves Media  
New Bethany  
NicNac Charities  
North Penn Legal Services, Inc.  
Northampton Community College  
Northeast Community Center  
Operation Address the Homeless  
Panther Valley School District  
Parkland CARES Food Pantry  
Parkland School District  
    Education Foundation

Penn Foundation, Inc.  
Pinebrook Family Answers  
ProJeCt of Easton, Inc.  
Promise Neighborhoods  
    of the Lehigh Valley  
Raising the House  
Red Door Early Learning Center  
Resurrected Community  
    Development Corporation  
Ripple Community, Inc.  
River Crossing YMCA  
SAARA Arts  
Safe Harbor Easton  
Salvaggio Academy  
SELF!  
Shanthi Project  
ShareCare Faith In Action  
Sights for Hope  
Slater Family Network  
St. Luke's University Health Network  
St. Luke's Miners Memorial Hospital  
The Bach Choir of Bethlehem  
The Children's Home of Easton  
The Kindness Project  
The Literacy Center  
The PM Foundation  
The Rilyc  
The Rising Sun Initiative  
The Salvation Army  
    of the Lehigh Valley  
The Thrive Hub, Inc.  
The Volunteer Center  
    of the Lehigh Valley  
The Volunteers of America  
    Children's Center  
Third Street Alliance for  
    Women & Children  
Touchstone Theatre  
Treatment Trends, Inc.  
Turning Point of Lehigh Valley, Inc.  
Unidos Inc.  
Valley Health Partners  
    Community Health Center  
Valley Youth House  
Valley Wealth Alliance  
Via of the Lehigh Valley, Inc.  
Victory House of Lehigh Valley  
Visiting Nurse Association of St. Luke's  
Wildlands Conservancy  
YWCA of Bethlehem

# United Way of the Greater Lehigh Valley

1110 American Parkway NE, Suite F-120, Allentown  
[www.UnitedWayGLV.org](http://www.UnitedWayGLV.org)



**UNITED  
WAY**