



# BROUGHAL

Middle School



## MATH

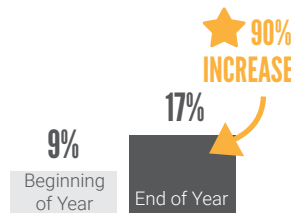
**ALMOST DOUBLED NUMBER OF STUDENTS PERFORMING ON GRADE LEVEL**

**STUDENTS DEMONSTRATED GROWTH IN MATH**



★ 69% ACHIEVED FULL GRADE LEVEL OF GROWTH

**STUDENTS PROFICIENT OR ADVANCED**



★ 90% INCREASE

All Grades

Source: IXL Math Diagnostic

**485**  
students



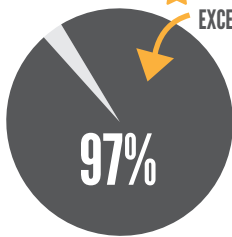
**BETHLEHEM**  
AREA SCHOOL DISTRICT



## LITERACY

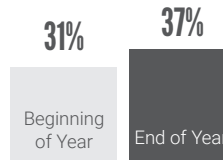
**ACADEMIC GROWTH ACROSS EVERY GRADE LEVEL**

**STUDENTS READING FLUENTLY AT OR ABOVE GRADE LEVEL**

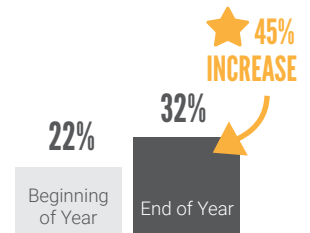


★ GOAL: 90% EXCEEDING READING GOALS

**STUDENTS PROFICIENT OR ADVANCED**



All Grades



★ 45% INCREASE

Eighth Grade

Source: Acadience Reading Growth Assessment



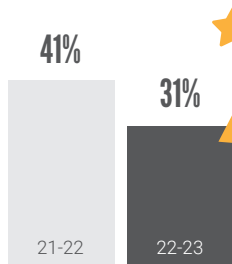
## STUDENT ATTENDANCE

**INCREASED NUMBERS OF STUDENTS REGULARLY ATTENDING SCHOOL**

**STUDENTS CHRONICALLY ABSENT**

(missing 10% or more days per year)

All Grades

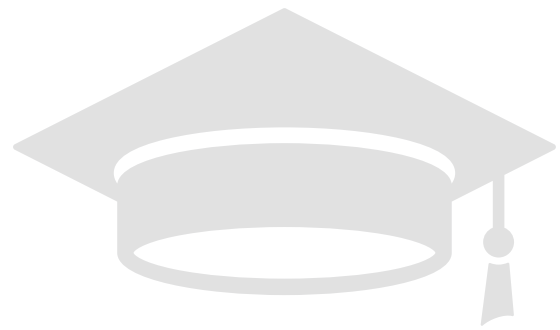


★ 25% DECREASE IN NUMBER OF STUDENTS

### KEYS TO SUCCESS:

- Monthly assemblies to celebrate student achievement and behavior
- Trauma-informed school practices
- Social-emotional learning for all students
- After-school programming selected with students' input

# BROUGHAL MIDDLE SCHOOL



## STUDENT MENTAL HEALTH

**100%** of students identified as needing behavioral health supports were **connected to services** through the Student Assistance Program

★ **100% CONNECTED FIVE CONSECUTIVE YEARS**

### BY THE NUMBERS:

- **125** students participated in **mentoring**
- **43** students participated in **support groups**
- **56** students connected to individual **mental health services**
- **50** students received **attendance** services and interventions



## SUMMER LEARNING

**PREVENTED LEARNING LOSS OVER THE SUMMER MONTHS**

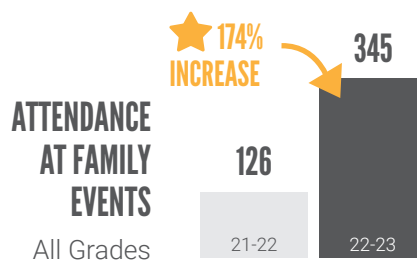
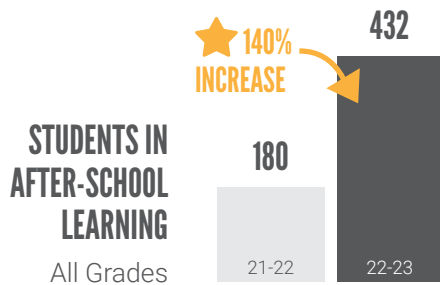
**68** students attended **summer programming**

that provided a safe space and fun activities to help them start the school year on track and ready to learn



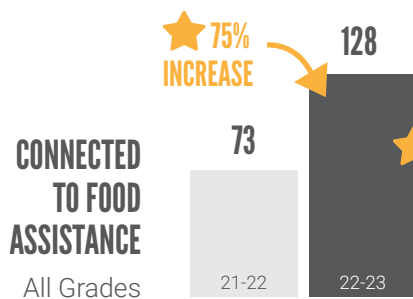
## STUDENT AND FAMILY ENGAGEMENT

**MORE THAN DOUBLED PARTICIPATION IN AFTER-SCHOOL AND FAMILY PROGRAMS**



## FAMILY STABILITY

**INCREASED CONNECTIONS TO FOOD, HOUSING AND FINANCIAL SUPPORTS**



★ **OFFERED FREE, HEALTHY FOOD IN PARTNERSHIP WITH SECOND HARVEST FOOD BANK**

**CONNECTED TO HOUSING AND FINANCIAL SUPPORTS**



*"We achieved this by cultivating a positive, safe culture and climate that feels good to students."*

– Anais Martinez  
Community School Coordinator