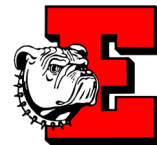


PAXINOSA

Elementary School

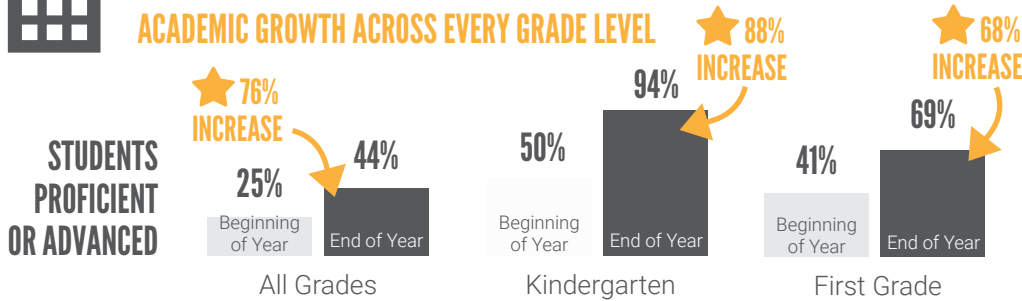


633
students



MATH

ACADEMIC GROWTH ACROSS EVERY GRADE LEVEL

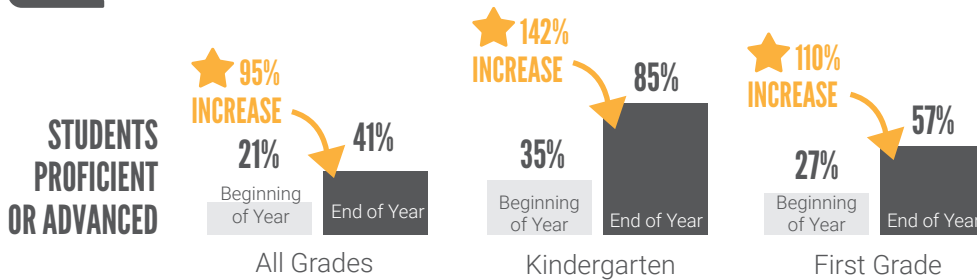


Source: STAR Math Assessment; IXL Math Diagnostic



LITERACY

ALMOST DOUBLED NUMBER OF STUDENTS READING ON GRADE LEVEL



Source: STAR Reading Assessment; Acadience Reading Growth Assessment

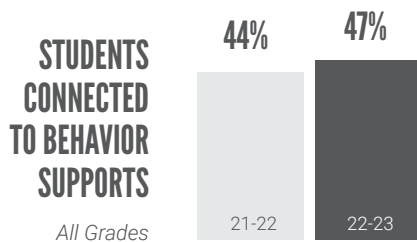
“Staff members from Crayola, students from Lafayette and members of Easton Life Church have been the heartbeat for our school, offering many hours of volunteer time so that we may run successful events at our school.”

– Jeanine Stanilious
Community School
Coordinator



STUDENT MENTAL HEALTH

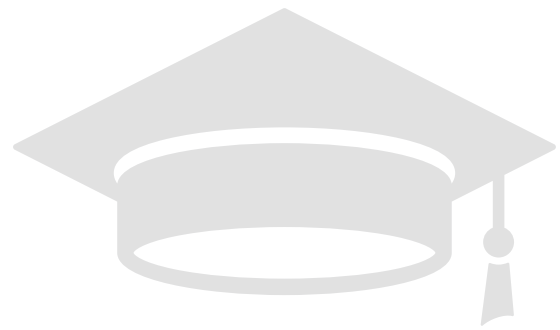
INCREASED CONNECTIONS TO MENTAL HEALTH SERVICES



Greater numbers of students identified as needing **behavioral health supports** through the Student Assistance Program were connected with services



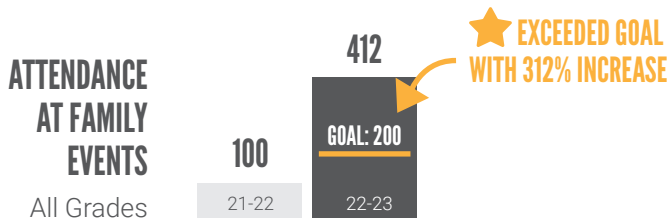
PAXINOSA ELEMENTARY SCHOOL



STUDENT AND FAMILY ENGAGEMENT

INCREASED PARTICIPATION IN AFTER-SCHOOL ENRICHMENT AND FAMILY EVENTS

426 students participated in **after-school learning**
 ★ **HIGHEST ATTENDANCE SINCE 2017-18**



COMMUNITY PARTNERSHIPS

SINCE 2017:

- Community volunteers gave **5,382 hours** to support Paxinosa at a dollar value of **\$136,526**
- In-kind donations total **\$263,969**

Paxinosa welcomed senior citizens, adults without school-age children and all members of Easton's West Ward community to use the school as a safe zone for support and resources. Community members participated in Paxinosa's food pantry, vaccine clinics and English language classes.



FAMILY STABILITY

INCREASED CONNECTIONS TO FOOD, HOUSING AND FINANCIAL SUPPORTS

More than 800 community members visited Paxinosa's **on-site food pantry**, open to anyone in the West Ward or Easton Area School District. Plus, a **local community market**, open weekly from May to October, offers local fresh produce and connections to community resources.

