

FRANCIS D. RAUB

Middle School

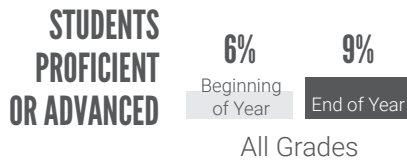


944
students



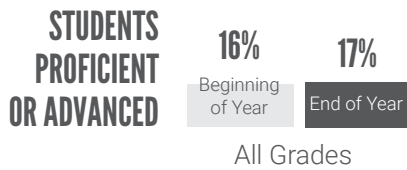
MATH

ACADEMIC GROWTH ACROSS EVERY GRADE LEVEL



LITERACY

ACADEMIC GROWTH ACROSS EVERY GRADE LEVEL



Source: STAR Reading and Math Assessments

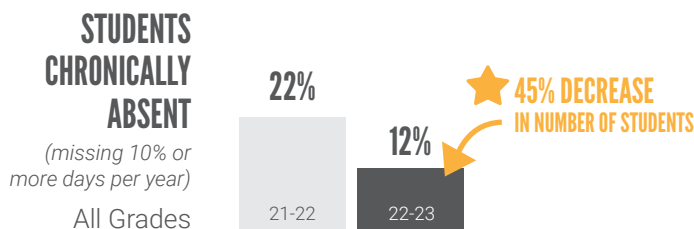
“This was the best year we’ve had in terms of volunteers and donations – with an overwhelming response and engagement from our community partners. Due to our wonderful partnerships with community members, businesses, and organizations, we have found ways to sustain our resources and do not limit the amount of times families can ask for help.”

– Olga Jaeger
Community School Coordinator

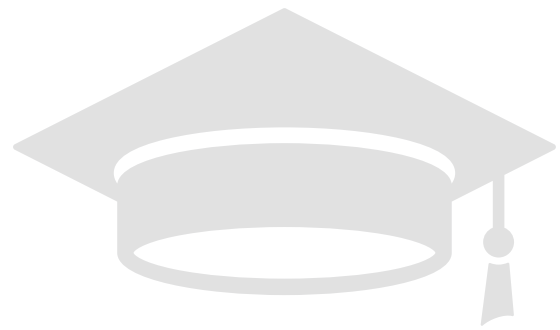


STUDENT ATTENDANCE

IMPROVEMENT IN CHRONIC ABSENCES

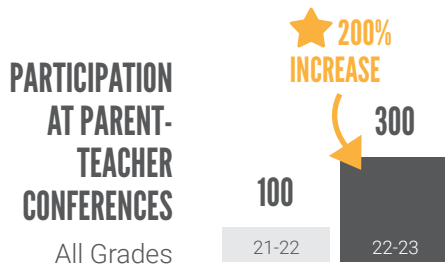
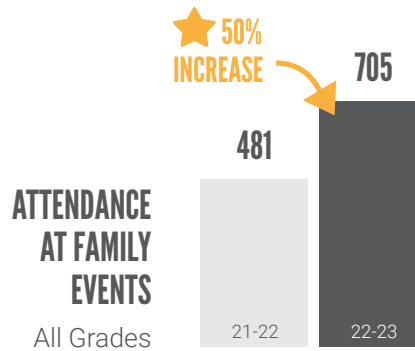
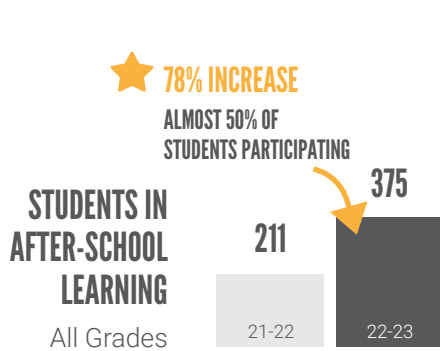


FRANCIS D. RAUB MIDDLE SCHOOL



STUDENT AND FAMILY ENGAGEMENT

INCREASED PARTICIPATION IN AFTER-SCHOOL AND FAMILY PROGRAMS



KEYS TO SUCCESS:

- School truancy officer
- Site coordinator dedicated to attendance
- School-wide attendance initiatives
- Incentives, such as dances and block parties

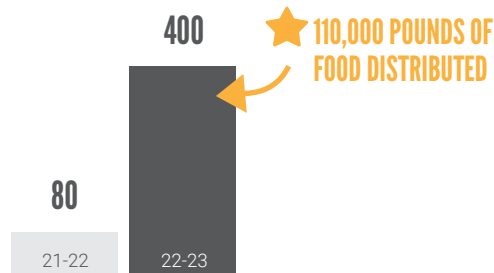


COMMUNITY PARTNERSHIPS

INCREASED ACCESS TO BASIC NEEDS RESOURCES

FIVE TIMES MORE

families connected to **food assistance** through Second Harvest Mobile Pantry:



- **818** students connected to **dental and vision services**
★ **HIGHEST NUMBER SINCE 2017**
- **\$350,000** through **in-kind donations**