



THOMAS JEFFERSON

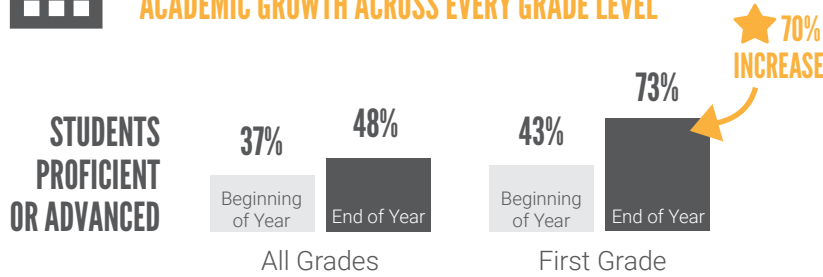
Elementary School

220
students



MATH

ACADEMIC GROWTH ACROSS EVERY GRADE LEVEL



Source: IXL Math Diagnostic



BETHLEHEM
AREA SCHOOL DISTRICT

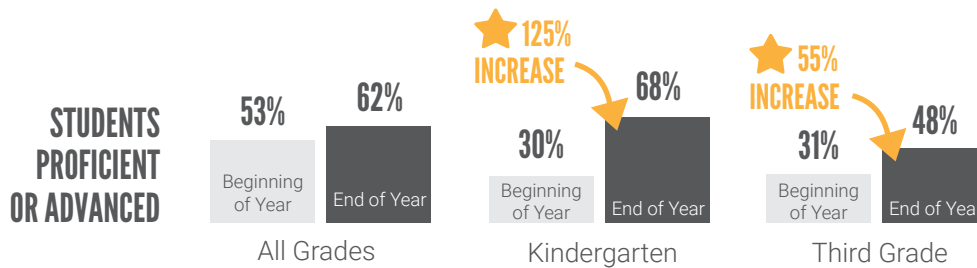
KEYS TO SUCCESS:

- Attendance incentives for individual students and whole classes
- Efforts to ensure that students felt supported and cared for
- Fun school-day and after-school activities in which students wanted to participate



LITERACY

ACADEMIC GROWTH ACROSS EVERY GRADE LEVEL

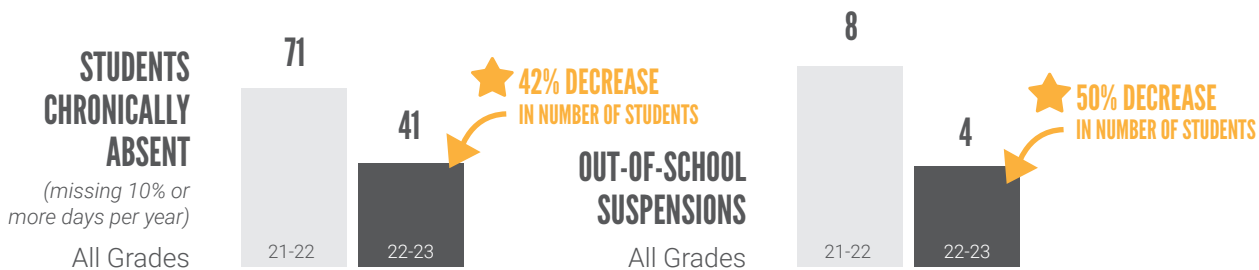


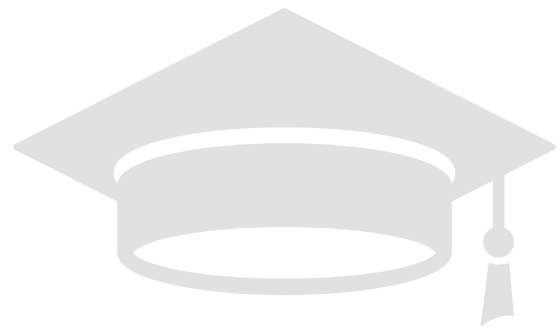
Source: Acadience Reading Growth Assessment



STUDENT ATTENDANCE

IMPROVEMENT IN CHRONIC ABSENCES





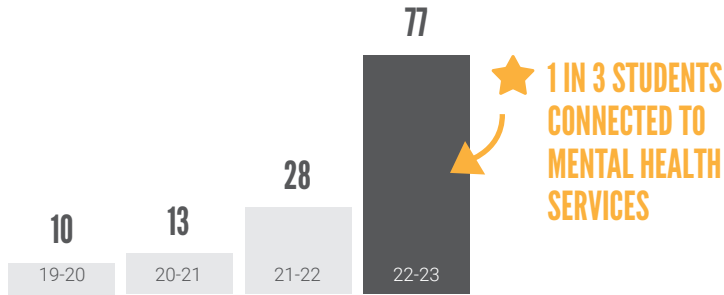
THOMAS JEFFERSON ELEMENTARY SCHOOL



STUDENT MENTAL HEALTH

INCREASED CONNECTIONS TO MENTAL HEALTH SERVICES

STUDENTS CONNECTED TO MENTAL HEALTH SUPPORTS
All Grades



"Efforts to build trust are now resulting in greater numbers of families willing to rely on United Way Community School services."

– Nancy Ettwein
Community School Coordinator



FAMILY STABILITY

INCREASED ACCESS TO BASIC NEEDS RESOURCES

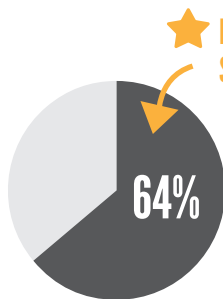
- **35** students connected with **dental and vision services**
★ **THE HIGHEST NUMBER OF STUDENTS SINCE 2019**
- **9** families connected with **food assistance**
- **8** families connected with **housing and financial support**



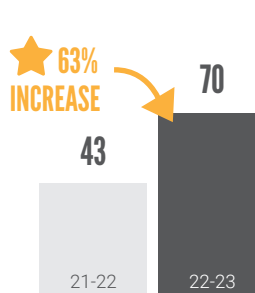
STUDENT AND FAMILY ENGAGEMENT

INCREASED PARTICIPATION IN AFTER-SCHOOL ENRICHMENT AND FAMILY EVENTS

STUDENTS IN AFTER-SCHOOL LEARNING
All Grades



ATTENDANCE AT FAMILY EVENTS
All Grades



PARTICIPATION AT PARENT-TEACHER CONFERENCES
All Grades

