



# 656 STUDENTS



Panther Valley School District



## MATH

DEMONSTRATED ACADEMIC GROWTH ACROSS GRADES 2 AND 3

STUDENTS PROFICIENT OR ADVANCED

2%

Beginning of Year

23%

End of Year

Source: iReady Diagnostic

All Grades

TOTAL NUMBER OF STUDENTS INCREASED FROM 7 TO 75

★ INCREASE OF 11 TIMES



## LITERACY

DEMONSTRATED ACADEMIC GROWTH

STUDENTS PROFICIENT OR ADVANCED

27%

Beginning of Year

32%

End of Year

Source: DIBELS assessment

Kindergarten

★ 19% INCREASE



## STUDENT ATTENDANCE

MORE STUDENTS REGULARLY ATTENDING SCHOOL

REGULAR STUDENT ATTENDANCE

72%

2022-23

77%

2023-24

(students attend 90% of school days or more)

All Grades

★ 7% INCREASE

### Keys to Success

- 118 students referred for Attendance Team services
- High interest in after-school enrichment programs

School Partners





## STUDENT MENTAL HEALTH

INCREASED CONNECTIONS TO MENTAL HEALTH SERVICES

### 46 STUDENTS

connected to individual mental health services



### 97 STUDENTS

connected to support groups - up from zero in 2022-23

#### Keys to Success

- Increased partnerships with mental health and social emotional wellness providers was a 2023-24 school goal.
- The Rural Health Centers provided mental healthcare services, regardless of insurance status or ability to pay.
- St. Luke's University Health Network offered school-based mental health counseling through its YESS (You Emotional Strength Supported) program for all grade levels.
- 97% of Panther Valley students demonstrated positive behavior, as measured by number of students who did not receive an out-of-school suspension.



## STUDENT AND FAMILY ENGAGEMENT

### 552 PARENTS/CAREGIVERS ATTENDED PARENT-TEACHER CONFERENCES

(84% of the school population)



### STUDENT PARTICIPATION IN AFTER-SCHOOL PROGRAMS INCREASED BY 420%

(15 in 2022-23 to 78 in 2023-24)

*"We're proud of our increased capacity to meet our community where they are to provide connection to vital resources and services. The strategies contributing to the success of the Community School model include the support received through the Panther Valley School District, United Way, St. Luke's University Health Network and AMETEK Foundation."*

- Nicole Pollinger, Panther Valley Community School Coordinator

# PANTHER VALLEY

Elementary  
School



## FAMILY STABILITY

**INCREASED CONNECTIONS TO FOOD, HOUSING AND FINANCIAL SUPPORTS**

**250 FAMILIES**

improved food security through a full-choice community food pantry partnership between Panther Valley, St. Luke's University Health Network and Second Harvest Food Bank. Free clothing and household items were also available to pantry attendees. On a case-by-case basis, food was delivered to families who had transportation issues.

**42 FAMILIES**

received housing security and support through connections to local social service agencies to help families with financial and housing needs. If a family has exhausted outside assistance, United Way grant funds are used to provide families with food, clothing, housing and utilities on a one-time emergency basis.

**75 STUDENTS**

received access to health care through:

- Star Community Health dental van
- St. Luke's Community Health Worker and Athletic Trainer

### Resources include:

- Food
- Clothing
- Hygiene supplies
- Household items
- School supplies



## COMMUNITY PARTNERSHIPS

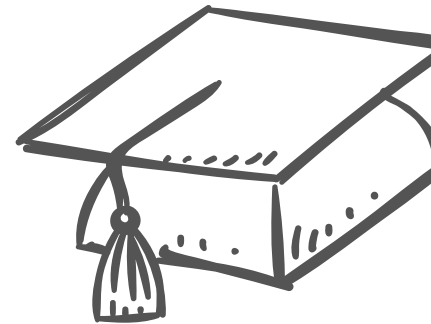
**EXPANDED AND DEEPENED CONNECTIONS WITH PARTNERS AND VOLUNTEERS**

**630 VOLUNTEER HOURS**

valued at \$20,034

**\$10,500**

in-kind donations



**UNITED  
WAY**

School Partners

**AMETEK**  
Foundation, Inc.

**St Luke's**  
UNIVERSITY HEALTH NETWORK